

TRACK ICE^{NB}

Sensor temperature CS225

- Temperature sensor with high accuracy
- 100% solar powered
- Temperature sensor for ex, frost depth measurement



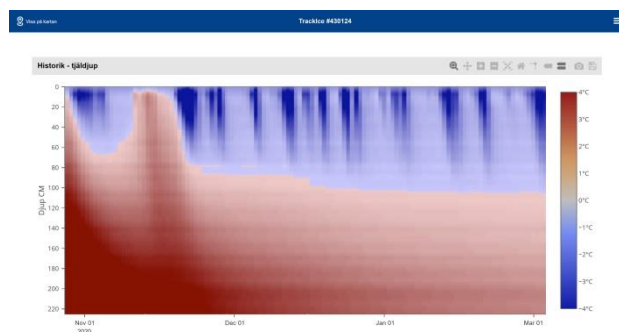
100% solar powered

The temperature sensor is powered and connected via the RS232 interface to the TrackIce NB Solar Module. The Solar Module is 100% powered by solar energy and communicates with Narrowband IoT and is therefore not dependent on any type of fixed infrastructure.

Temperature measurement with high accuracy

The sensor is used to measure temperature in different media. It is easily mounted by connection to the Track Ice Solar Module.

To the right is an example of a diagram from Mowic Online on frost depth over a season (Nov-March).



CS225 Temperature sensor



Communication	SDI-12
Range	-55°C to +85°C
Accuracy	±0.2 °C
Length cable	Customized (2-150 m)
Sensors per cable	Customized (10-36 pcs) Minimum distance between sensors 15 cm

